

NEW
PRODUCT!

SD09/12 正型 4 刃多功能铣刀

可用于面铣、高进给铣削、倒角铣加工

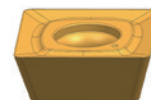


● 产品介绍

澳克泰工具新推出 SD09/12 系列多功能铣刀，刀片采用正型设计，切削轻快，单面 4 条切削刃，全压制级刀片，性价比高。刀体结构设计多样，包含芯轴式、螺纹头式、圆柱柄式、侧固柄式，应用范围广，可用于面铣、高进给铣削、倒角铣削等加工。刀片材质丰富，可满足钢件、不锈钢、铸铁、难加工等材料的需求。

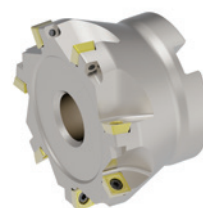
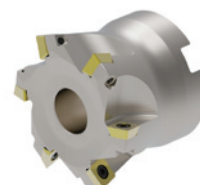
● SD09/12 刀片介绍

- 刀片槽型：MM4（通用型）、MR2（强化型）
- 采用正型设计，单面 4 条切削刃，切削轻快
- 全压制级刀片，高性价比
- 刀片规格：09 和 12
- 多种圆角可供选择，含 R0.8, R2.0, R2.5
- 刀片材质丰富：AP251U, AP403M, AP351M, AP251K, AC151K, AP403S

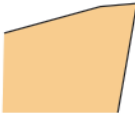
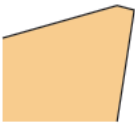


● AFM89/AHM15/ACM45-SD09/12 刀体介绍

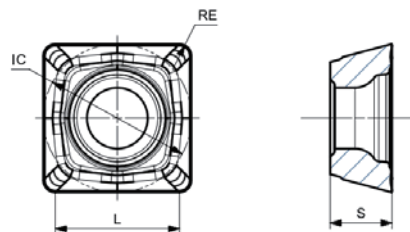
- 刀体类型：AFM89（面铣）、AHM15（高进给）、ACM45（倒角）
- 刀体接口形式：芯轴式，圆柱柄，侧固柄，螺纹头式
- 主偏角（Kr）：面铣 89.5°，高进给 15°，倒角 45°
- 全系刀体外冷设计，经济性高
- 刀片螺钉 Torx Plus 10/15
- 刀体表面镀镍处理，耐磨、耐腐蚀且美观
- 丰富的产品类型可对应各种加工需求
 - 面铣刀体直径：φ25-125mm
 - 高进给刀体直径：φ25-125mm
 - 倒角刀体直径：φ12-32mm



刀片槽型介绍

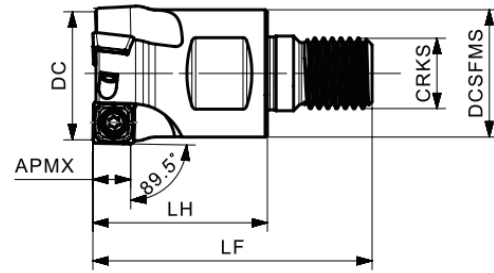
槽型名称	刃口形状	应用场合
MM4 (通用型)		用于中等加工工况 通用加工槽型 可用于大多数材料加工
MR2 (强化型)		用于中等及以上加工工况 通用加工槽型 可用于大多数材料加工




SD09/12 刀片型号

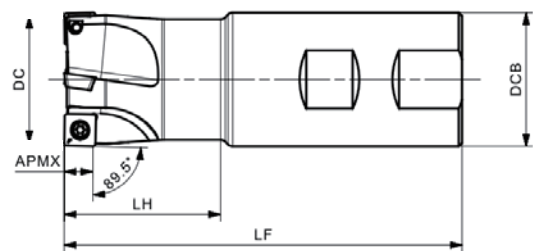
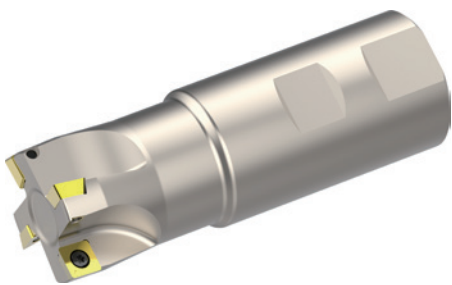





刀片	产品型号	尺寸 (mm)				P		M		K		S
		L	IC	S	RE	AP25IU	AP35IU	AP35IM	AP403M	AC15IK	AP25IK	AP403S
	SDMT 09T308N-MM4	7.985	9.525	3.97	0.8	●		●	●	●	●	
	SDMT 09T320N-MM4 ▲	5.525	9.525	3.97	2.0	●		●	●	●	●	●
	SDMT 120408N-MM4	11.100	12.7	4.76	0.8	●		●	●	●	●	
	SDMT 120425N-MM4	7.700	12.7	4.76	2.5	●		●	●	●	●	
	SDMT 09T308N-MR2 ▲	7.971	9.525	3.97	0.8	●		●	●	●	●	
	SDMT 09T320N-MR2	5.511	9.525	3.97	2.0	●		●	●	●	●	
	SDMT 120408N-MR2 ▲	11.100	12.7	4.76	0.8	●		●	●	●	●	

●：标准库存品 ▲：一阶段上市产品型号

AFM89-SD09/12 刀体型号


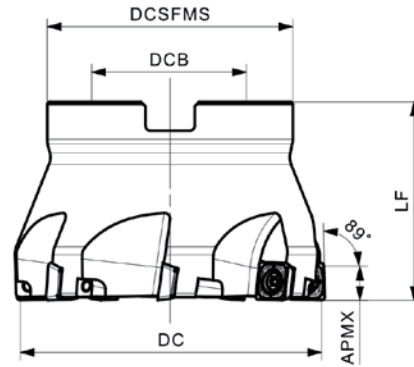
型 号	DC	CRKS	DCSFMS	LF	LH	APMX	内冷	Z	刀片型号
AFM89-025-Z02-M12R-SD09	25	M12	23	57	35	8.6		2	SDMT 09T308N.. SDMT 09T320N..
AFM89-032-Z02-M16R-SD09	32	M16	29	64	40	8.6		2	
AFM89-032-Z03-M16R-SD09	32	M16	29	64	40	8.6		3	



型 号	DC	DCB	LF	LH	APMX	内冷	Z	刀片型号
AFM89-025-Z02-W25R-SD09	25	25	100	44	8.6		2	SDMT 09T308N.. SDMT 09T320N..
AFM89-032-Z03-W32R-SD09	32	32	110	51	8.6		3	
AFM89-040-Z04-W40R-SD09	40	40	120	50	8.6		4	

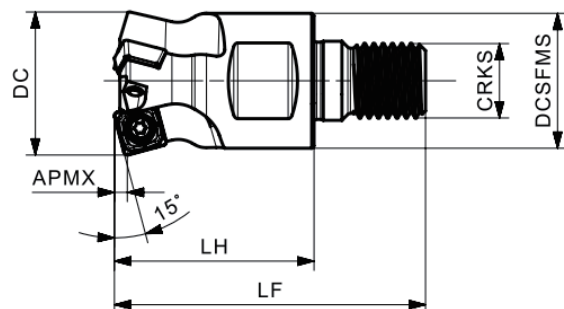






● **AFM89-SD09/12 刀体型号**

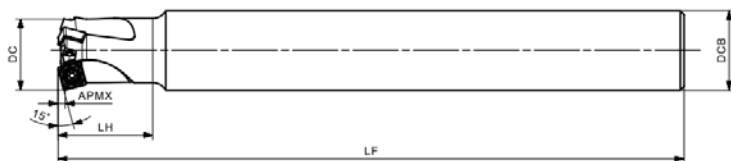




型 号	DC	DCB	DCSFMS	LF	APMX	内冷	Z	刀片型号
AFM89-040-Z04-A16R-SD09	40	16	35	40	8.6		4	SDMT 09T308N.. SDMT 09T320N..
AFM89-050-Z05-A22R-SD09	50	22	45	40	8.6		5	
AFM89-063-Z06-A22R-SD09	63	22	48	40	8.6		6	
AFM89-080-Z07-A27R-SD09	80	27	62	40	8.6		7	
AFM89-050-Z04-A22R-SD12	50	22	45	40	11.7		4	SDMT 120408N.. SDMT 120425N..
AFM89-063-Z05-A22R-SD12	63	22	45	40	11.7		5	
AFM89-080-Z07-A27R-SD12	80	27	62	50	11.7		7	
AFM89-100-Z08-A32R-SD12	100	32	80	50	11.7		8	
AFM89-125-Z09-A40R-SD12	125	40	87	63	11.7		9	
AFM89-125-Z10-A40R-SD12	125	40	87	63	11.7		10	

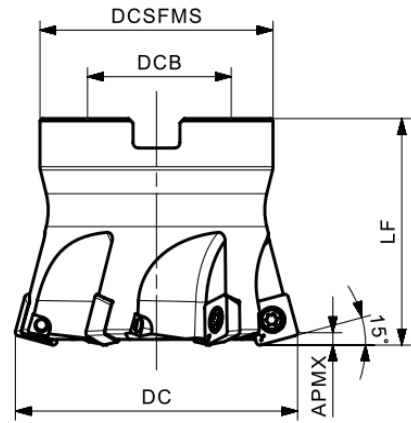
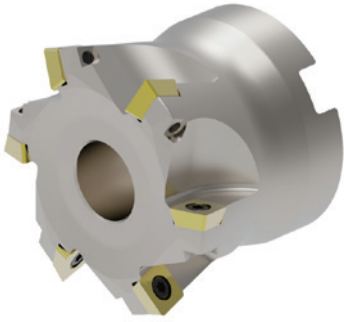
● AHM15-SD09/12 刀体型号














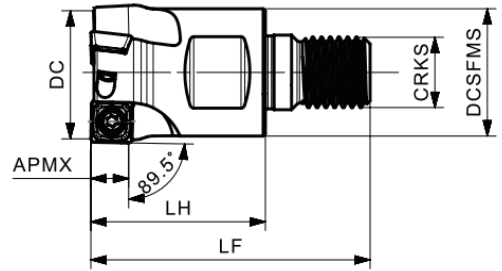
型号	DC	CRKS	DCSFMS	LH	APMX	内冷	Z	刀片型号
AHM15-025-Z02-M12R-SD09	25	M12	23	35	1.5		2	SDMT 09T308N.. SDMT 09T320N..
AHM15-026-Z02-M12R-SD09	26	M12	23	35	1.5		2	
AHM15-032-Z03-M16R-SD09	32	M16	29	43	1.5		3	
AHM15-033-Z03-M16R-SD09	33	M16	29	43	1.5		3	



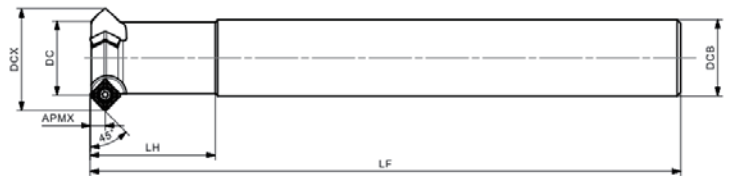
型号	DC	DCB	LF	LH	APMX	内冷	Z	刀片型号
AHM15-025-Z02-C25R-SD09-L200	25	25	200	30	1.5		2	SDMT 09T308N.. SDMT 09T320N..
AHM15-032-Z03-C32R-SD09-L250	32	32	250	43	1.5		3	

AHM15-SD09/12 刀体型号


型 号	DC	DCB	DCSFMS	LF	APMX	内冷	Z	刀片型号
AHM15-040-Z03-A16R-SD09	40	16	35	40	1.5		3	SDMT 09T308N.. SDMT 09T320N..
AHM15-042-Z04-A16R-SD09	42	16	35	40	1.5		4	
AHM15-050-Z05-A22R-SD09	50	22	45	40	1.5		5	
AHM15-052-Z05-A22R-SD09	52	22	45	40	1.5		5	
AHM15-063-Z06-A22R-SD09	63	22	52	50	1.5		6	
AHM15-050-Z04-A22R-SD12	50	22	45	40	2.0		4	SDMT 120408N.. SDMT 120425N..
AHM15-052-Z04-A22R-SD12	52	22	45	40	2.0		4	
AHM15-063-Z05-A22R-SD12	63	22	48	50	2.0		5	
AHM15-080-Z06-A27R-SD12	80	27	62	50	2.0		6	
AHM15-100-Z07-A32R-SD12	100	32	80	50	2.0		7	
AHM15-125-Z08-A40R-SD12	125	40	87	63	2.0		8	

ACM45-SD09/12 刀体型号


型号	DC	DCX	CRKS	DCSFMS	LF	LH	APMX	内冷	Z	刀片型号
ACM45-016-Z02-M08R-SD09	16	28	M08	15	42	25	5.5		2	SDMT 09T308N.. SDMT 09T320N..
ACM45-020-Z02-M10R-SD09	20	32	M10	18	52	32	5.5		2	
ACM45-025-Z03-M12R-SD09	25	37	M12	23	59	37	5.5		3	
ACM45-032-Z03-M16R-SD09	32	44	M16	29	70	46	5.5		3	
ACM45-025-Z02-M12R-SD12	25	41	M12	23	59	37	7.5		2	SDMT 120408N.. SDMT 120425N..
ACM45-032-Z03-M16R-SD12	32	48	M16	29	70	46	7.5		3	

ACM45-SD09/12 刀体型号


型号	DC	DCX	DCB	LF	LH	APMX	内冷	Z	刀片型号
ACM45-012-Z01-C16R-SD09-L160	12	24	16	160	25	5.5		1	SDMT 09T308N.. SDMT 09T320N..
ACM45-016-Z02-C16R-SD09-L160	16	28	16	160	30	5.5		2	
ACM45-020-Z02-C20R-SD09-L180	20	32	20	180	35	5.5		2	
ACM45-025-Z03-C25R-SD09-L200	25	37	25	200	42	5.5		3	
ACM45-032-Z03-C32R-SD09-L250	32	44	32	250	53	5.5		3	
ACM45-025-Z02-C25R-SD12-L200	25	41	25	200	30	7.5		2	SDMT 120408N.. SDMT 120425N..
ACM45-032-Z03-C32R-SD12-L250	32	48	32	250	43	7.5		3	



应用案例

工件名称：涡轮壳

工件材料：1.4848

刀具型号：AFM89-032-Z03-W32R-SD09

刀片型号：SDMT 09T308N-MR2

刀具材质：AP403M

加工工序：插铣



切削参数：客户现有产品 澳克泰

Vc [m/min]	100	100
fz [mm]	0.12	0.12
ap [mm]	2	2
冷却	乳化液	乳化液
寿命 (件)	28	35

对比：刀具寿命 (件)

